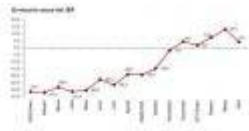
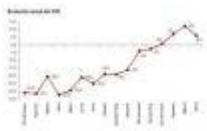


# **BACK TO THE OLD WAYS**

*Posted on 17/06/2010 by Naider*



The recently published [business figures and order intake by the INE](#) could not be more discouraging. They fell by 49.6% and 67.9% respectively and could be pointing to a change in trend in the timid increases in demand that Spanish companies were experiencing; all you have to do is look at the graphs.

These data, on the other hand, do nothing more than confirm my suspicions that the policies to cut public spending are very

premature and will have very negative consequences with regard to growth and employment, if they are not already having it based on expectations. advance of the agents.

We will remain very attentive to the evolution of the data

**There are no comments yet.**