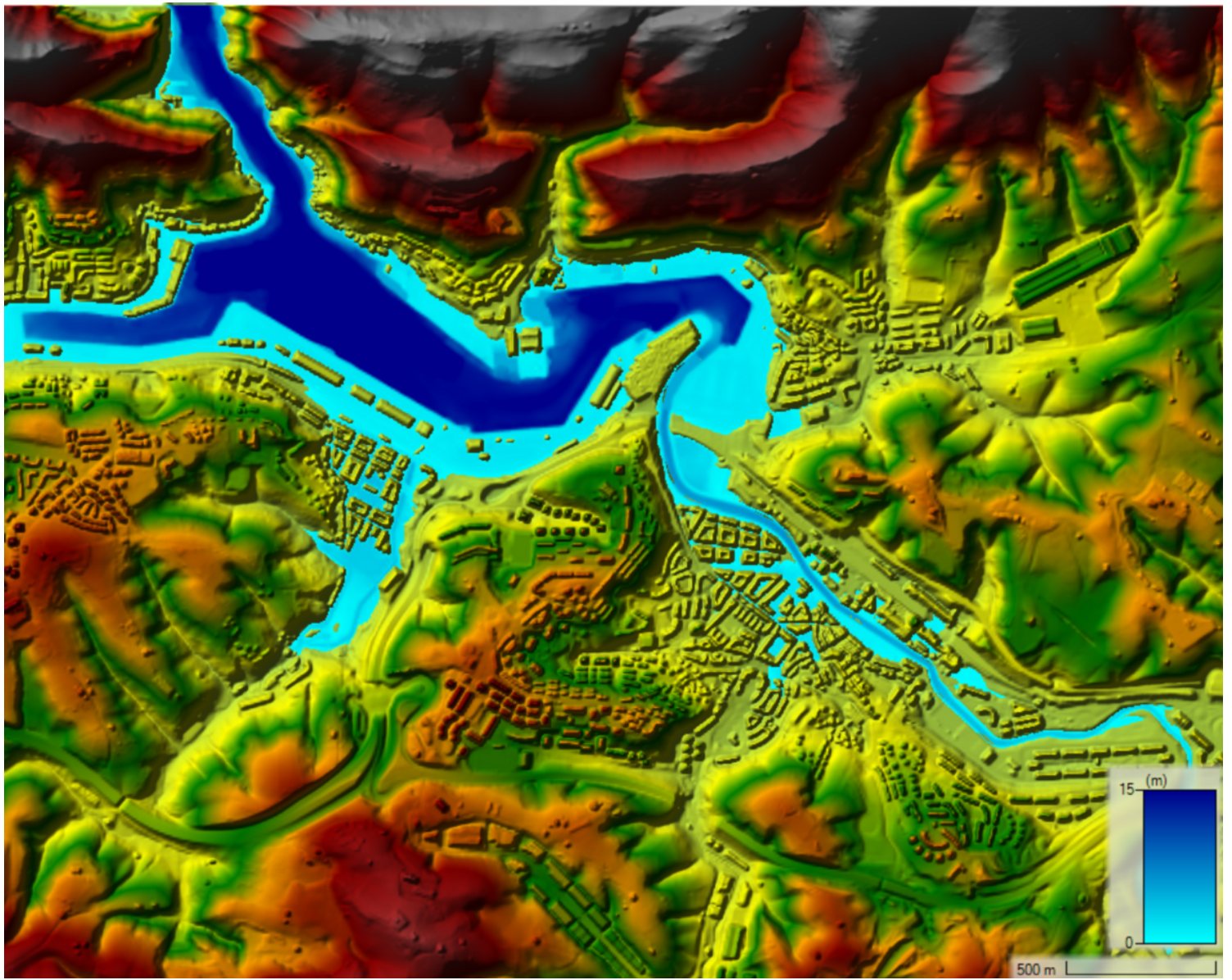


# DESIGN AND CONCEPTION OF CLIMATE PROJECTIONS WITH CONSORZIO LAMMA

*Posted on 14/04/2024 by Naider*

**Category:** [News](#)

**Tags:** [Climate risk, mitigation and adaptation](#), [Proyecciones climáticas](#), [SCORE](#)



Last week we had the pleasure of flying to Florence to work with our colleagues from [Consorzio LaMMA](#) within the framework of the European SCORE project. During the visit we discussed the design and conception of coastal and river flood models for the port of Pasaia and the Oiartzun River.

The idea we are working on is to understand the existing and future economic damage caused by flooding in line with climate projections, as well as to demonstrate the power of nature-based solutions to reduce flooding and therefore the economic damage caused in urban environments.

